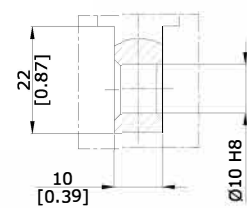
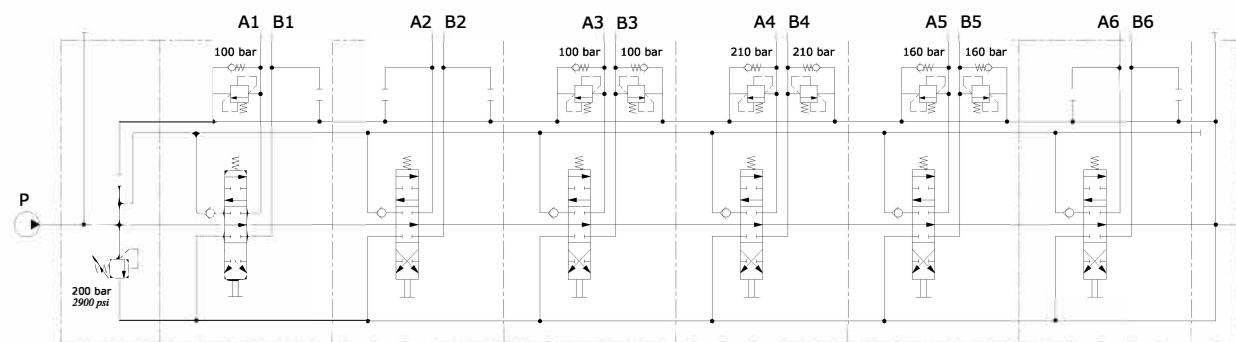


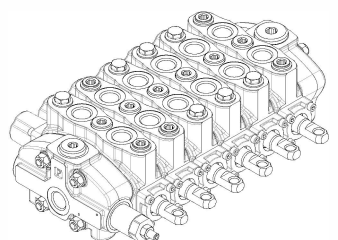
**DETAIL Y
SCALE 2:1**



HYDRAULIC CIRCUIT



ISOMETRIC VIEW



Rev.Nr.	Rev.Date	Description
WORKING CONDITIONS		
Nominal flow	80 l/min.	
Max. flow	1000	
Max. Operation Pressure	350 bar	
Max. Back Pressure (T)	20 bar	
P-A-B-C Working Pressure	320 bar	
Hydraulic fluid	Mineral base oil	
Viscosity range	from 12 to 400mm ² /s	
Seal material	NBR	
Fluid Temperature		
with NBR seals	from - 20° to 80°C	
with FPM seals	from - 20° to 100°C	
Max. level of contamination	19/16 - ISO 4406	
Internal Leakage	50ml ³ / min. at 100 bar	
	32mm ³ /s (32cS) at 40 °C	
Port Size		
	Inlet P	GL/2
	A and B ports	GL/2
	Outlet T	GS/4
Color	-	

Hydrax гидрокompоненты

DESCRIPTION
80L GS10/6/
AC(X-200)/
RPHT-1BSLP.P.U1(100)/
RPHT-1BSLP.P3T/
RPHT-1BSLP.U3(1
RPHT-1BSLP.U3(210)/
RPHT-1BSLP.U3(160)(160)

SITOLERANCE	±0.1	REVISION NR.	00
MATERIAL	-	ALL RIGHTS RESERVED	
HARDENES	-		
NAME		DATE	SIGN
DRAWER	ZT	12.10.2022	
CHECKING	BE	12.10.2022	
TECHNICAL REFERENCE		CODE	
WEIGHT		SCALE: 1:1	

80060078 A1 M

TECHNICAL REFERENCE CODE
SCALE: 1:1
DRAWING NR. 2022.363